



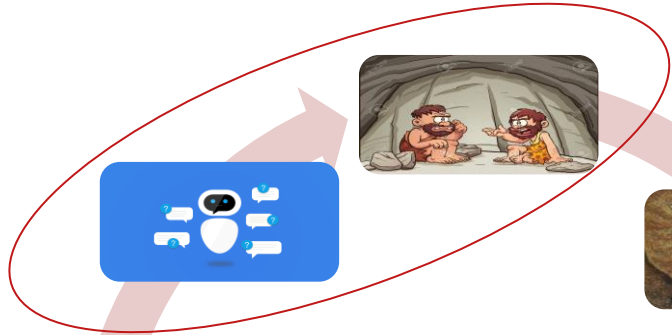
Writing for chatbots

Sheena Lakshmi | Charanya Jayaraman

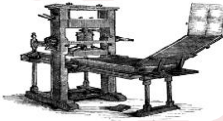
McAfee Software India Pvt Ltd

STC-India Annual Conference, Mumbai, December 7th, 2018

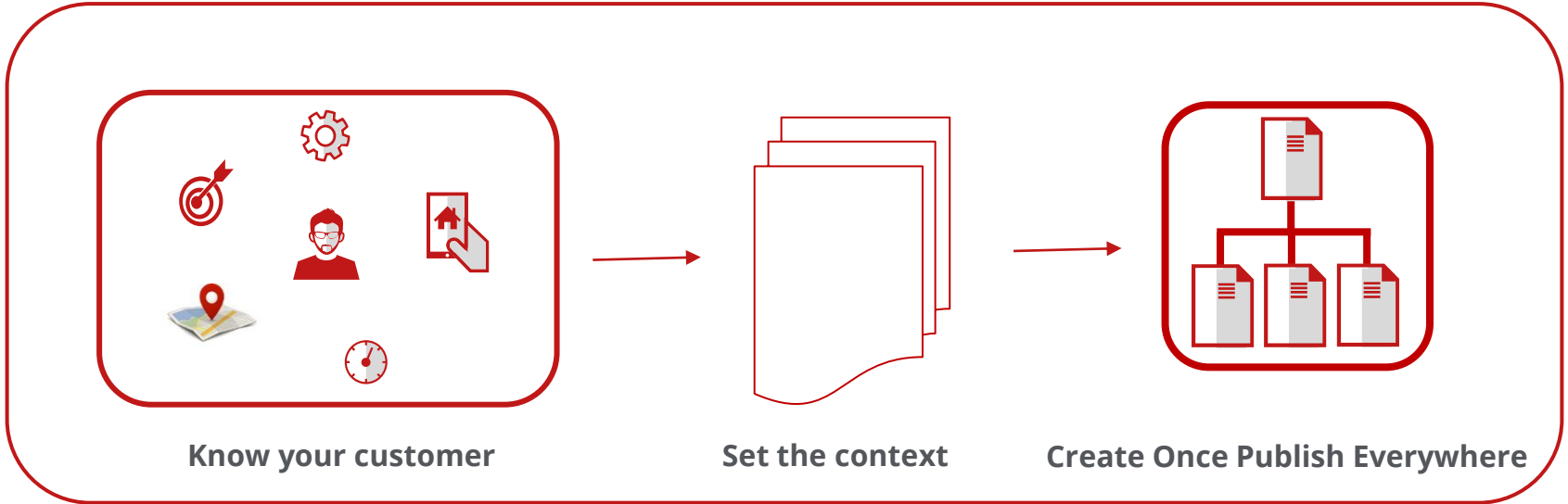




Evolution of Information exchange



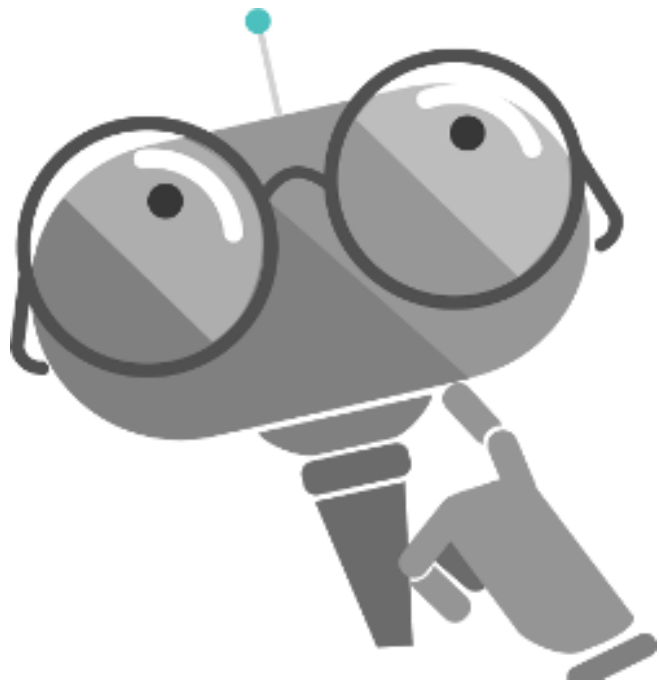
Context-focused content delivery



Writing for Chatbots

- Most cognitive systems in today's artificial intelligence space ride on **contexts, intents, and data**
- **Data** is nothing but content: **structured** and **unstructured**
- Artificial Intelligence will not work if there is no **CONTENT** and that's where modular and structured authoring come into play





Chatbot...

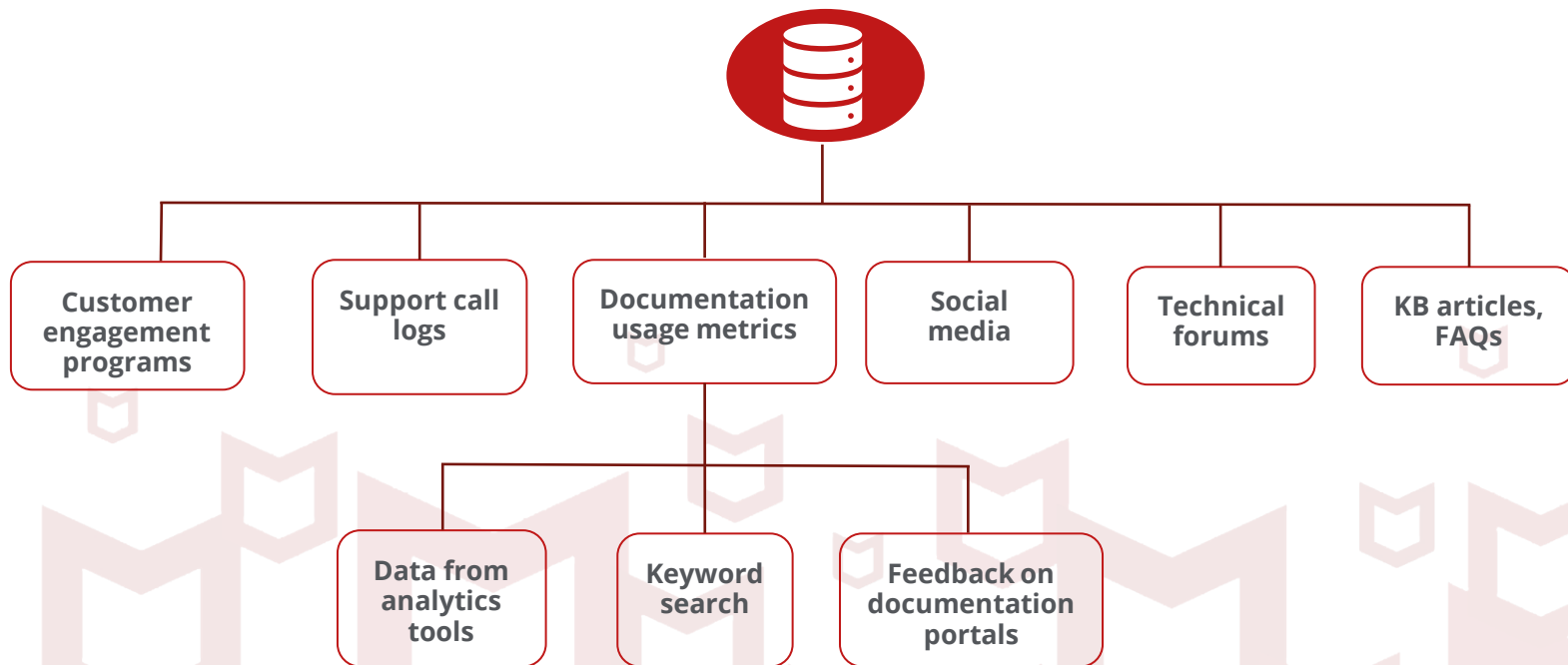
- Is a program that uses a conversational interface to address user queries
- Requires a deep understanding of customers
- Can only complement existing support channels but cannot replace them
- Is best suited for mundane tasks and well-defined workflow models

Defining a bot strategy



- Do you really need a chatbot?
- Identify customer pain points and behavior
- Develop a personality for your bot that identifies with the culture and values of your company

Introspecting existing content



Conversation with a chatbot

Need to install a mounting bracket

Sure, please help me with your bill number.

R00123REX67801

You bought the SG234 TV on 21st November and need help with installing the bracket?

Yes

Do you want to install a wall mount bracket or a table mount bracket?

Wall mount

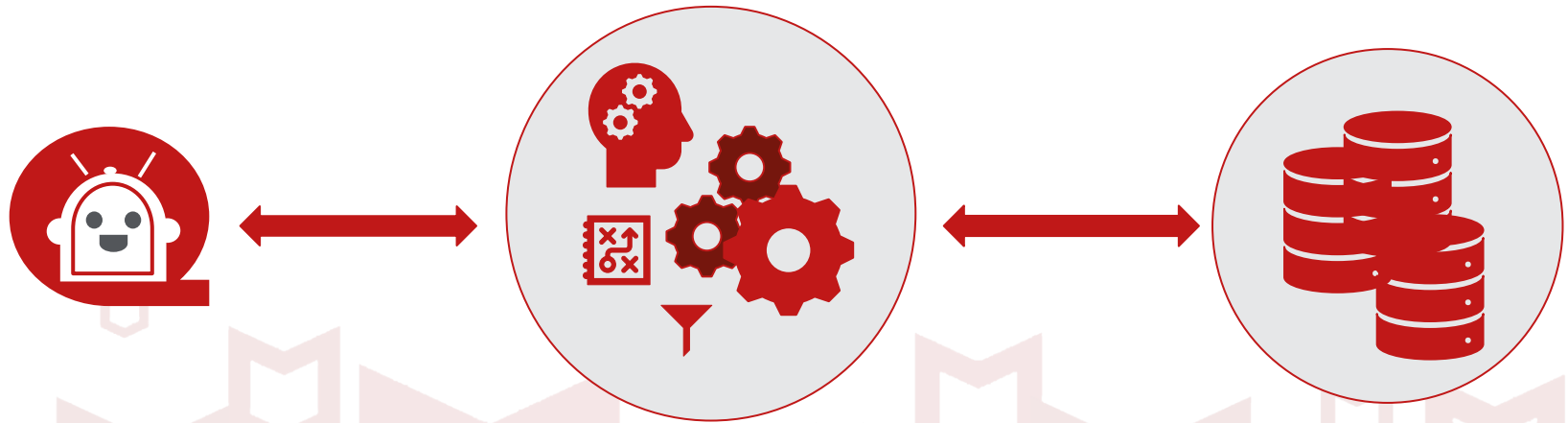
Here you go...

[Installing the wall mounting bracket](#)

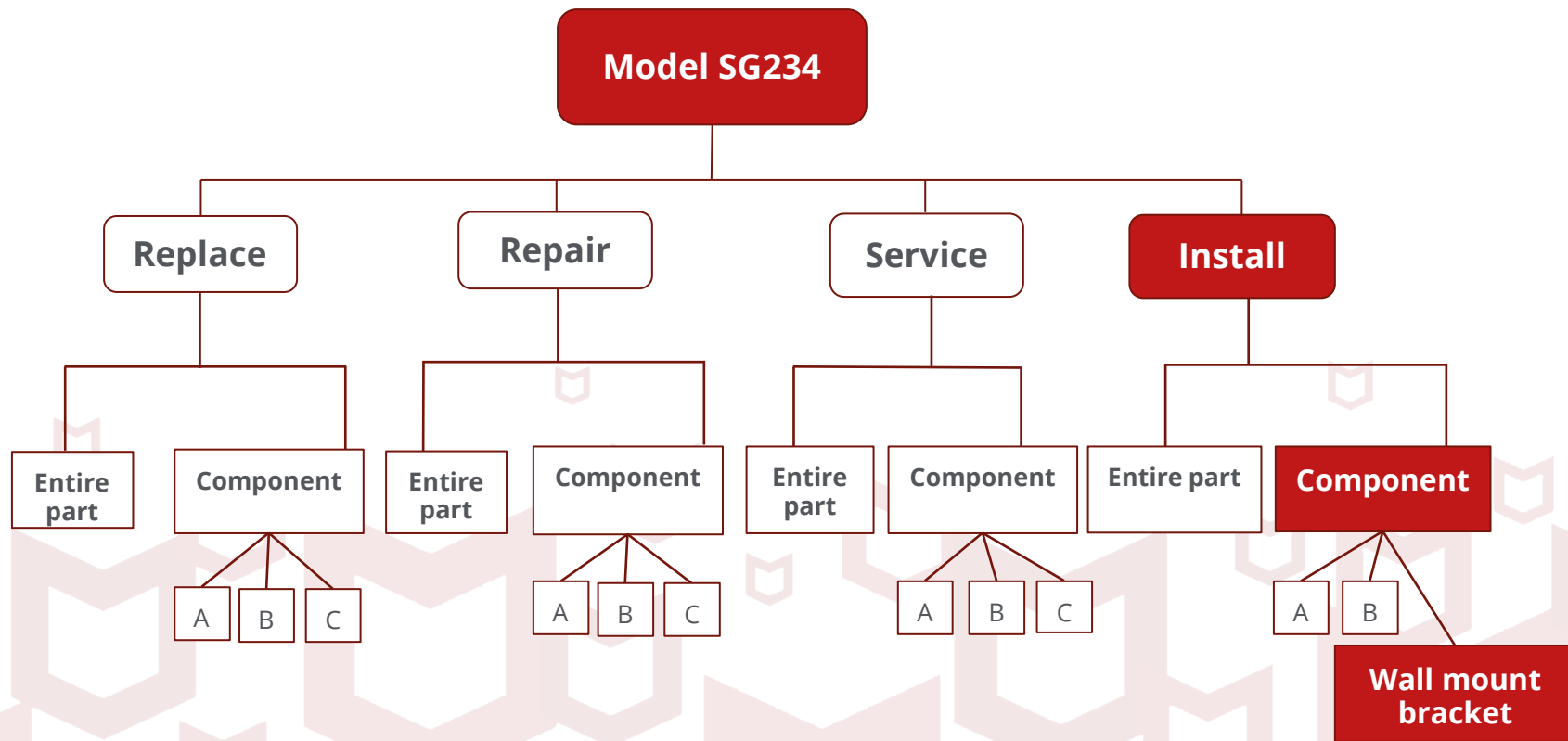
The bot was able to help you because it was successful in:

- Defining the **context**
- Identifying the **intent** and **entities**

The chatbot architecture



Narrowing down intents in our example



Intent

What's the
Bill number?

I need to install
the mounting
bracket

Do you have a
wall mount
bracket or a
table mount
bracket?

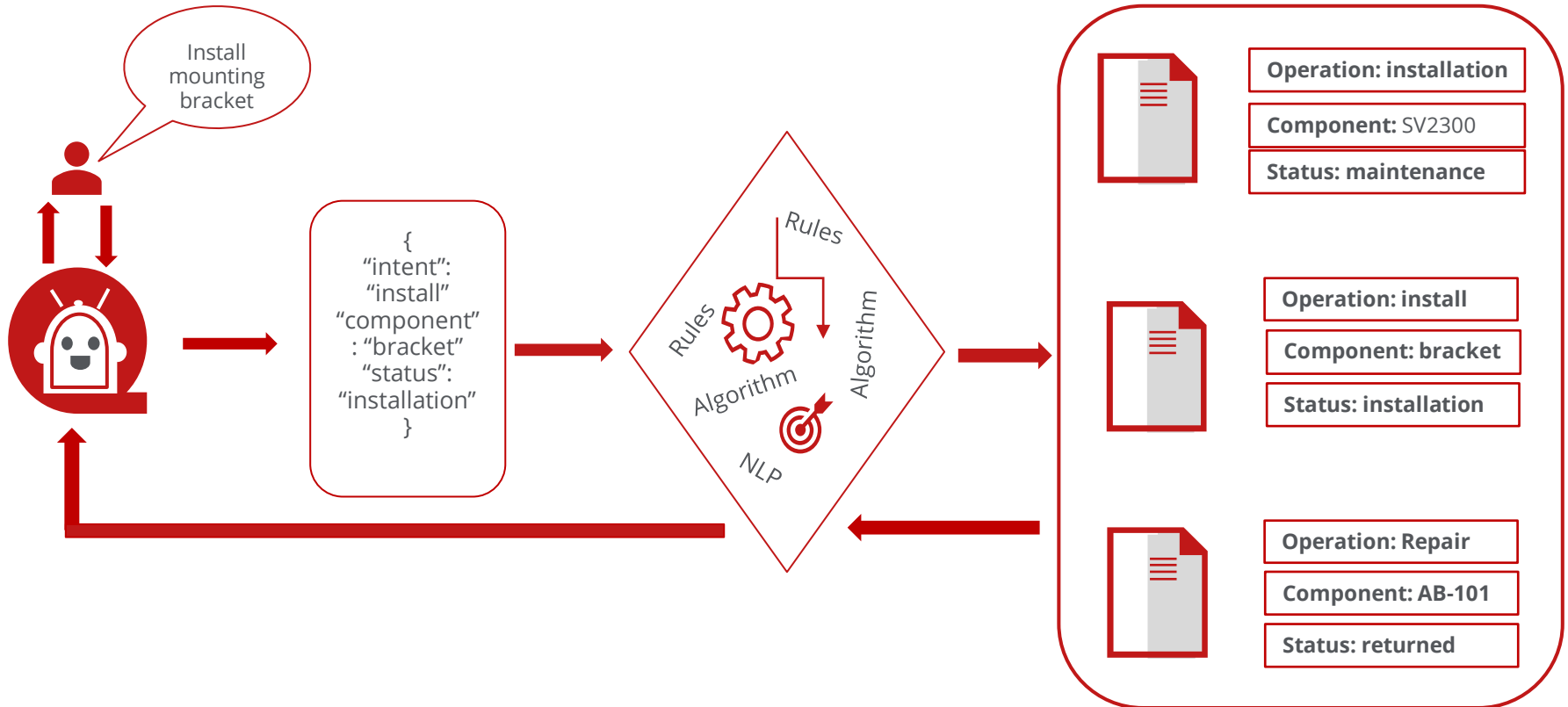
Bill number

First time
installation

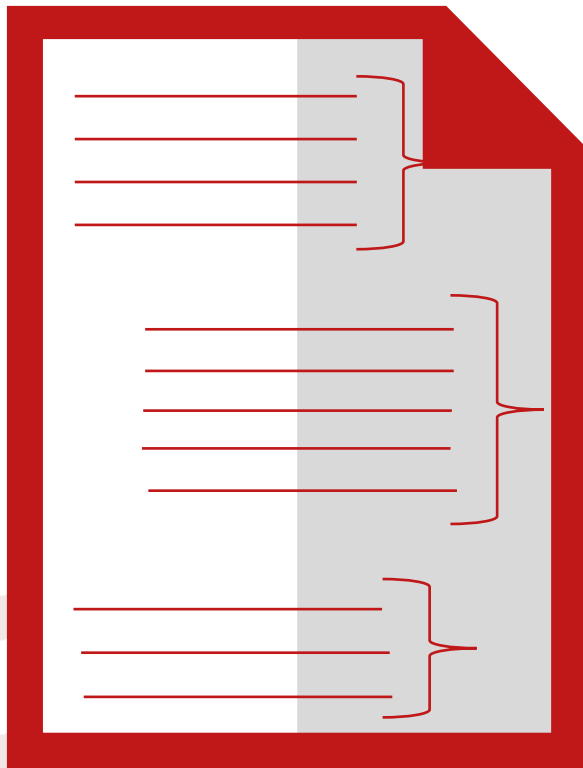
Wall mount

Entities

Matching Intent and fetching response



Microcontent within topics



General information about the component

Steps to install the component

Safety instructions or caution or notes

Procedure for installing a mounting bracket

Install the wall-mount bracket

Your TV comes with two types of mounting brackets: Wall mount and Table mount. Read the safety instructions before attempting to install the mounting bracket.

1. Check the parts required for the installation.
 - a) Prepare four or more 8mm diameter or equivalent screws and a screw driver. Select screws suitable for the material of the wall.
 - b) Unpack the carton and check to see that all the following items are included. The items are:
 - Base bracket
 - Mounting hook
 - Screws
 - Wrench
2. Decide on the installation location.
 - a) Refer to the TV installation dimensions table and decide on the installation location.
 - b) Refer to the wall mounting dimensions diagram and determine the positions of the screws for installing the base bracket.
3. Install the mounting bracket on the wall.
 - a) Determine the screw holes to attach the mounting hook to the base bracket.
 - b) Attach them securely using the supplied screws.
 - c) Drill holes on the wall on the marked positions.
 - d) Secure the mounting bracket on the wall using the screws provided.

Sections as discrete chunks (microcontent)

Install the wall-mount bracket

Your TV comes with two types of mounting brackets: Wall mount and Table mount. Read the safety instructions before attempting to install the mounting bracket.

Types of mounting brackets

Checking the parts required for the installation

1. Prepare four or more 8mm diameter or equivalent screws and a screw driver. Select screws suitable for the material of the wall.
2. Unpack the carton and check to see that all the following items are included. The items are:
 - Base bracket
 - Mounting hook
 - Screws
 - Wrench

* Prerequisites for installation
* How many screws?
* What is the dimension of the screws
* Items in the carton

Deciding on the installation location

1. Refer to the TV installation dimensions table and decide on the installation location.
2. Refer to the wall mounting dimensions diagram and determine the positions of the screws for installing the base bracket.

What are the dimensions of the TV?
Where do I mount the TV

Installing the mounting bracket on the wall

1. Determine the screw holes to attach the mounting hook to the base bracket.
2. Attach them securely using the supplied screws.
3. Drill holes on the wall on the marked positions.
4. Secure the mounting bracket on the wall using the screws provided.

* How can I install a mounting bracket
* Procedure to install wall mount bracket

Points to ponder...

Conversational content

- Match each user task with an utterance or training phrase
- Speak the customer's language
- Keep it simple and factual
- Stay away from jargons
- Use an informal tone
- Be honest with your customers; tell them it's a bot
- Incorporate feedback
- Always anticipate the unexpected
- Build trust

Micro-content

- Should be precise and technical
- More collaborative
- One part in a total system
- One primary idea fact or concept
- Easily scannable
- Labelled for clear identification and meaning
- Format independent
- No more content silos

Last but foremost: think, think, and think.....a lot



Questions

